

Customer :

customer

Customer part :

customer part

Comment :

Comment

S1=0.01

S2=0.08

Tmax=428

Tp S2=467.0

PI=0.14

HI=400

Sample =4621.39

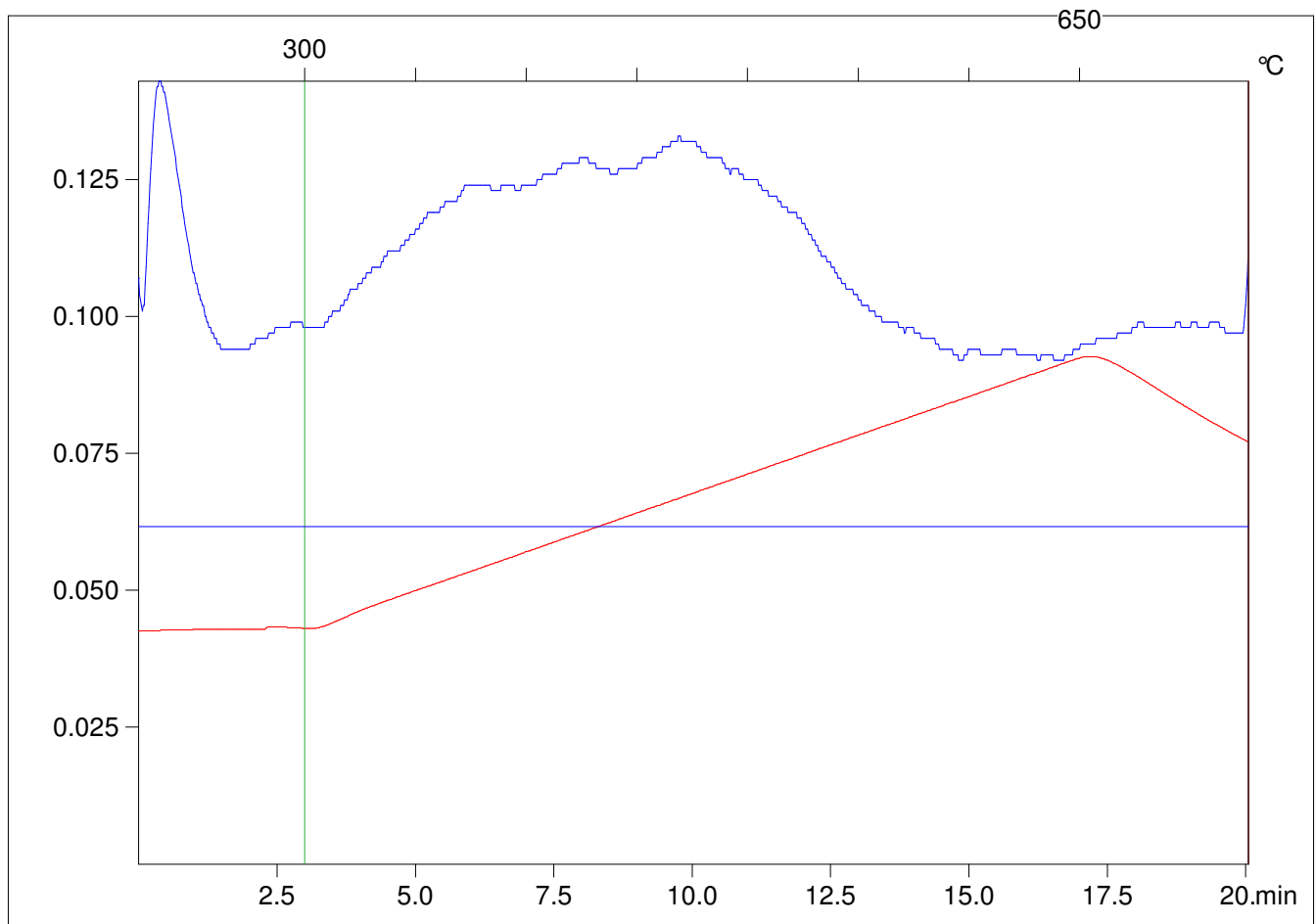
Method =Bulk Rock

Cycle=Basic

KFID(10*9)=1167

Qty =70.7

TOC=0.02



C:\VINC\PK141021\PK031.R00 : FID pyrolysis graphic

State

Pyro Status

Oxi Status